

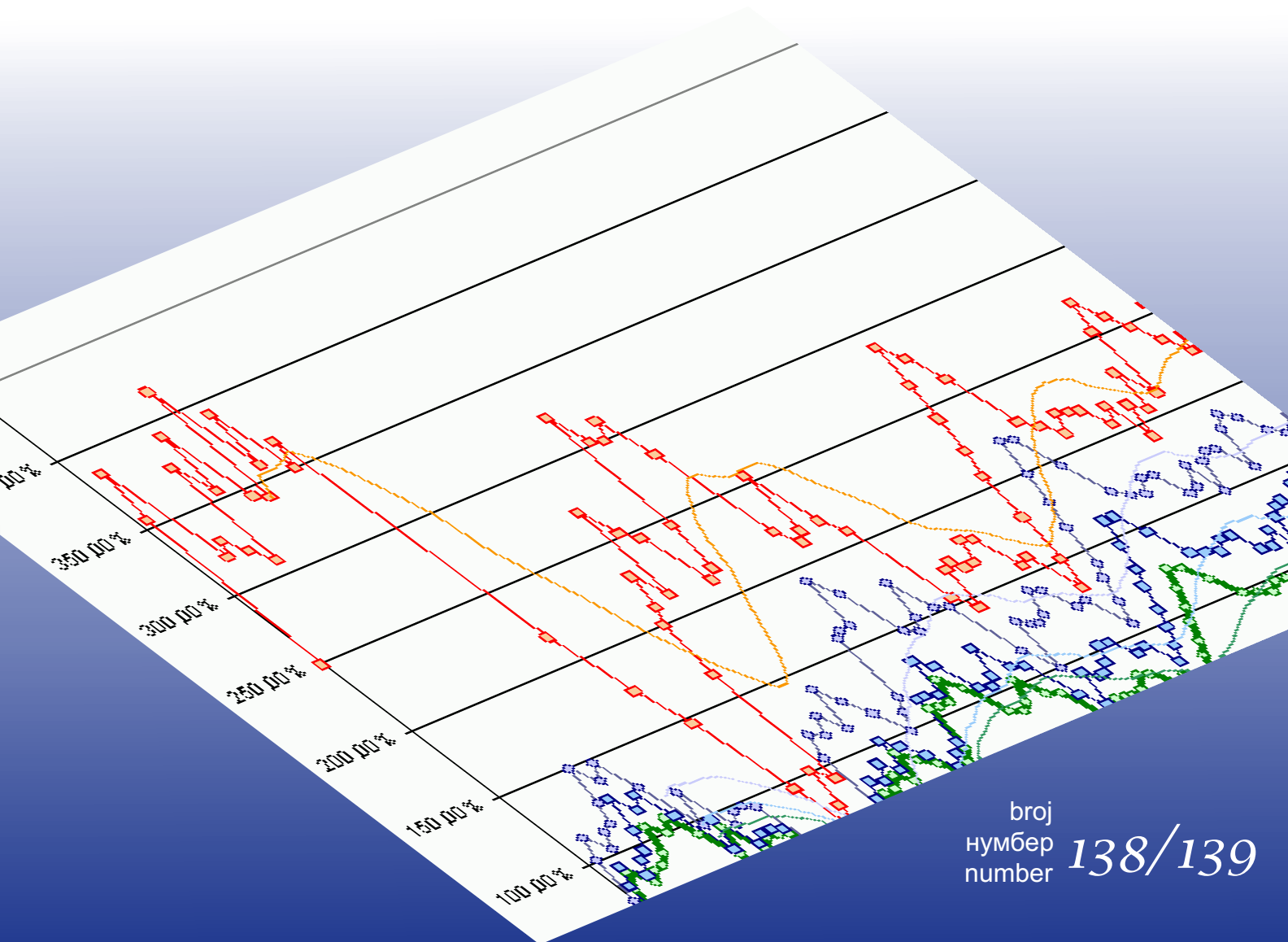
Bosna i Hercegovina
Odjeljenje za makroekonomsku analizu
Upravnog odbora Uprave za indirektno-
neizravno oporezivanje



Босна и Херцеговина
Одјељење за макроекономску анализу
Управног одбора Управе за индиректно-
неизравно опорезивање

Macroeconomic Unit of the Governing Board of the Indirect Tax Authority

Oma Bilten



broj
нумбер
number **138/139**

With this issue

Bearing in mind the historical trends and the traditional increase in consumption at the end of the year due to the holidays, it was realistic to expect a continuation of positive trends in collection of indirect taxes in December. However, data from the preliminary report of the ITA indicate that the positive expectations have been exceeded. The net collection of indirect taxes in December 2016 increased by as much as 11,4% compared to the same month of 2015, due to the strong growth in gross collection. The unexpectedly strong growth in collection of indirect taxes in December has also increased the growth in net cumulative collection, so that the year 2016 ended with a surplus of 272 million (Chart 1) or growth of 5,2% compared to the collection of indirect taxes in 2015 (Chart 2).

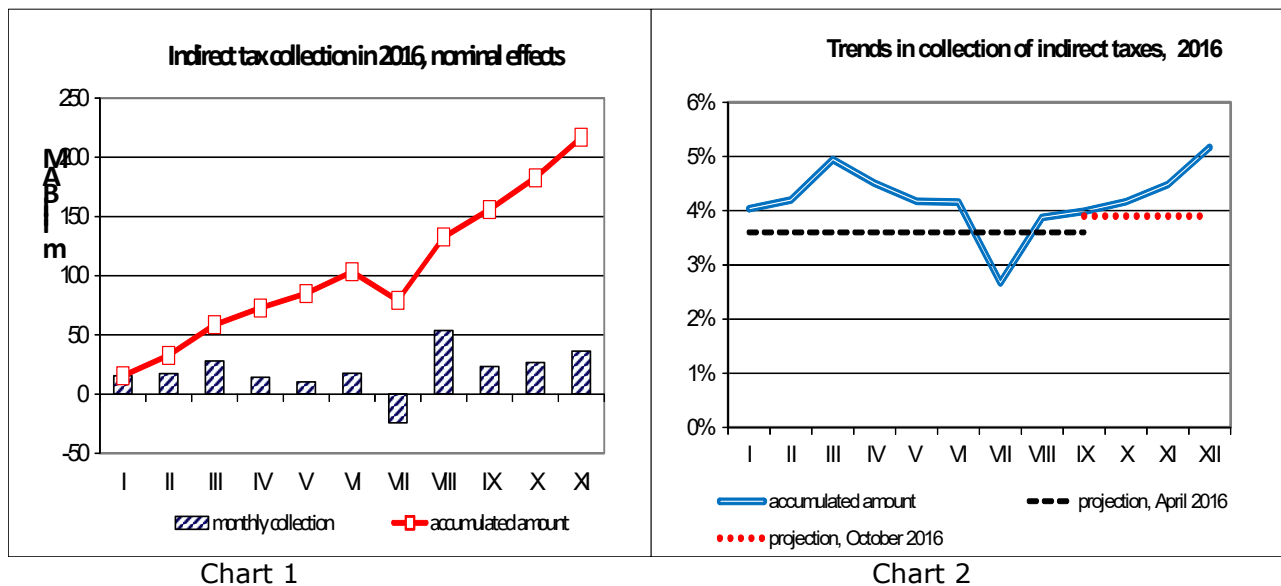


Chart 1

Chart 2

The positive trends in December increased the cumulative surplus in revenues from VAT to 178,4 million KM, and in customs revenues to 8,4 million KM. Negative trends in revenues from excise duties on tobacco in December couldn't significantly threaten the cumulative growth, so that the surplus in the excises and road taxes, due to stable collection of duties on oil, amounted to 79,8 million KM. This issue of the Bulletin provides the analysis of collection in 2016, with the assessment of the main factors and causes that have contributed to the current trends in revenue collection from indirect taxes in B&H.

Dinka Antić, PhD
Head of Unit

Table of contents:

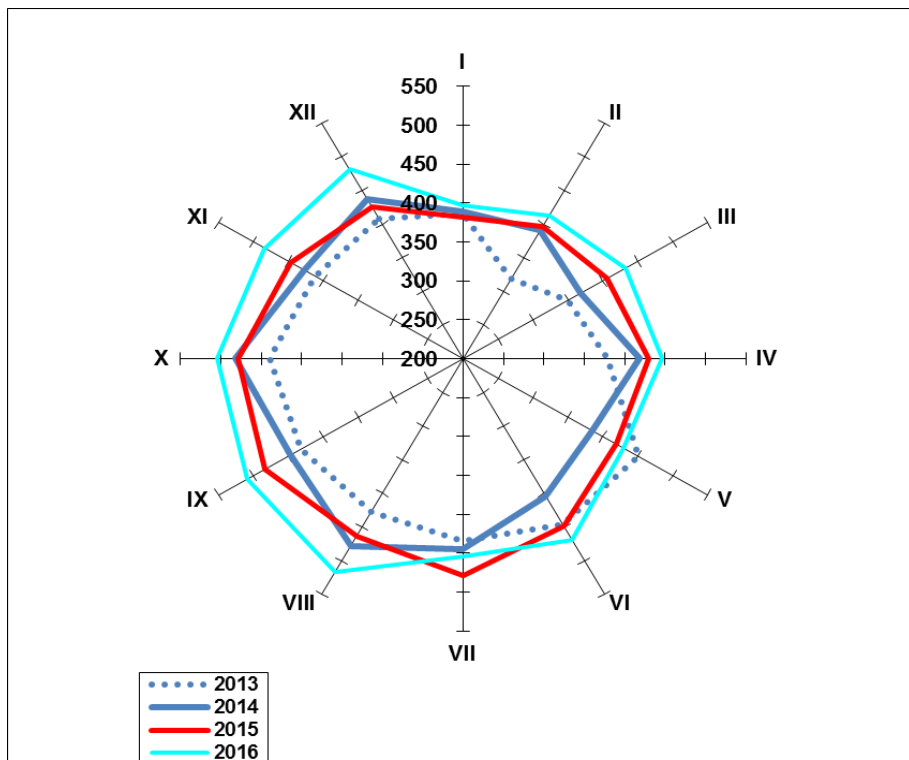
Indirect tax revenue collection in 2016 – charts and notes

2

Technical design: Sulejman Hasanović, IT expert

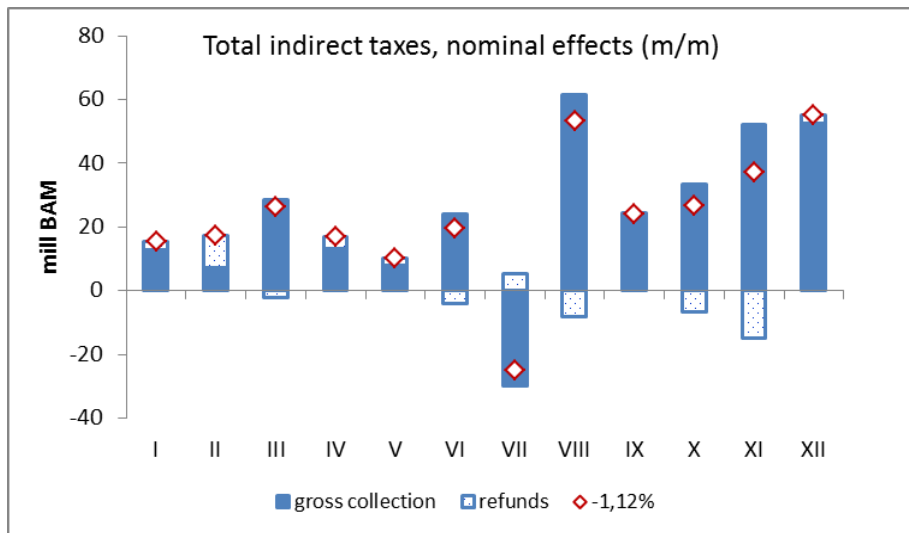
Indirect tax revenue collection in 2016

TOTAL COLLECTION



Annual performance in 2016 - Change, Y/Y

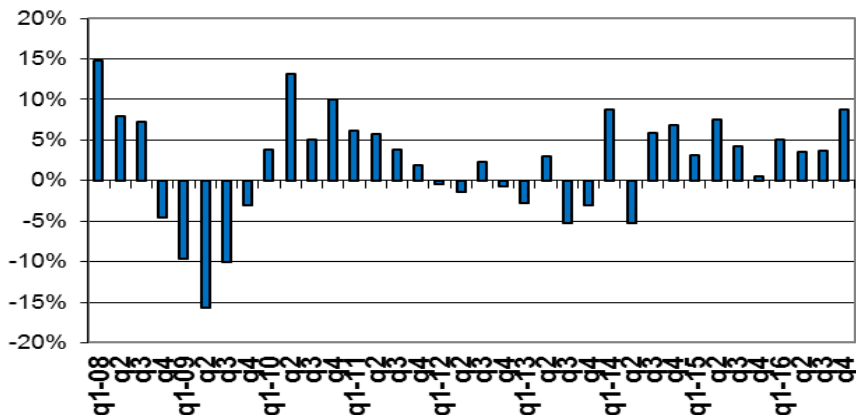
Gross collection	4,5%
Refunds	1,2%
Net collection	5,2%



Annual collection in 2016, in bn BAM

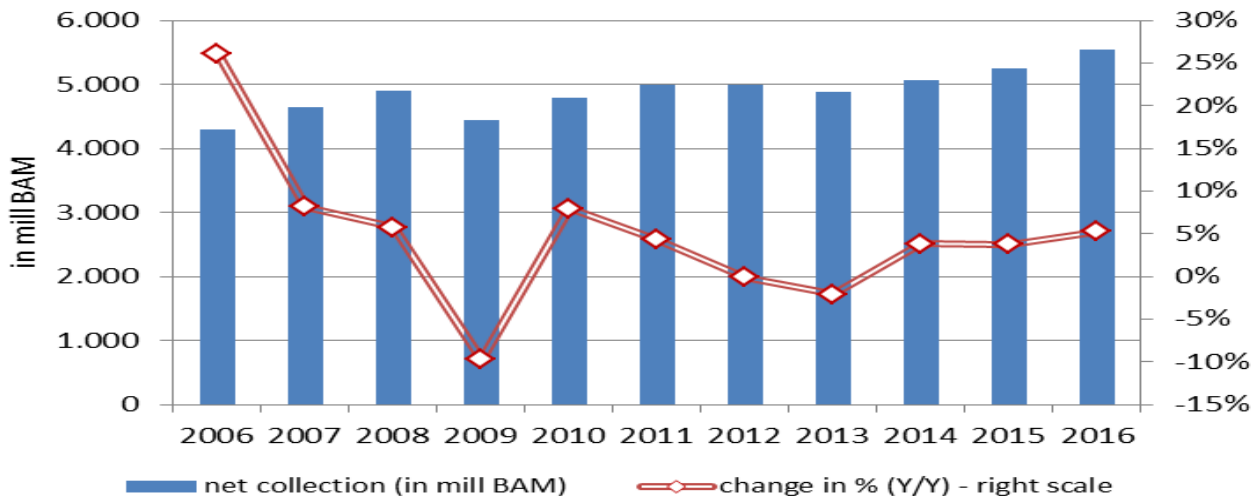
Gross collection	6,64
Refunds	1,11
Net collection	5,53

Changes in indirect tax collection (q/q)



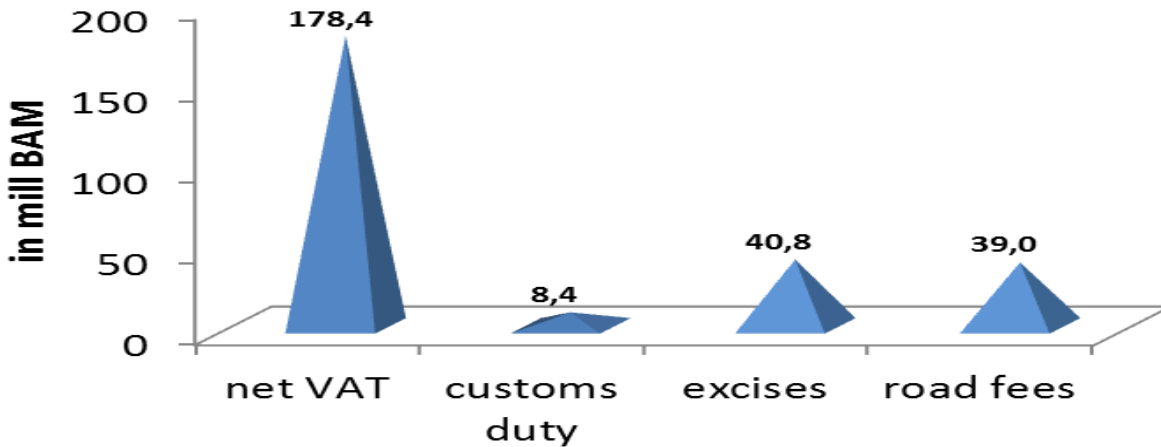
Quarterly trends, 2016

Q1	5,0%
Q2	3,6%
Q3	3,7%
Q4	8,8%

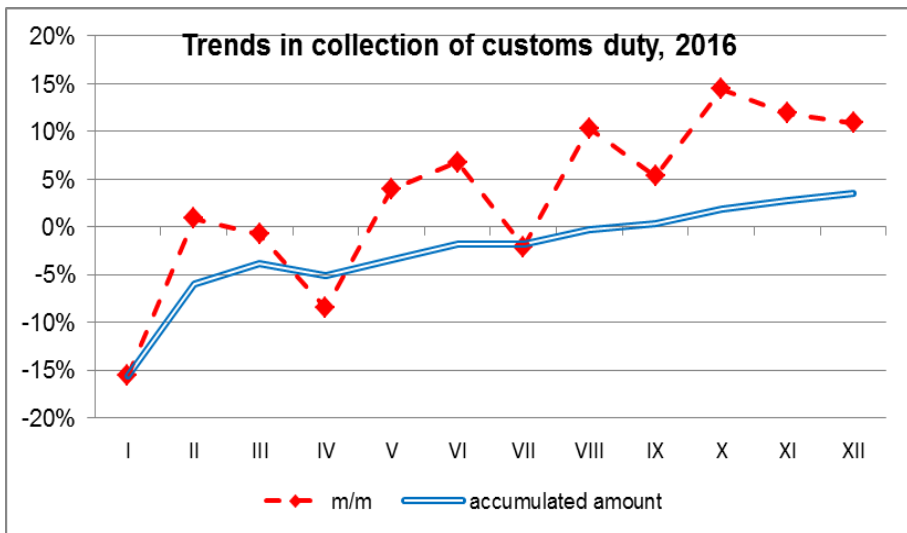


TREND BY TYPE OF REVENUE

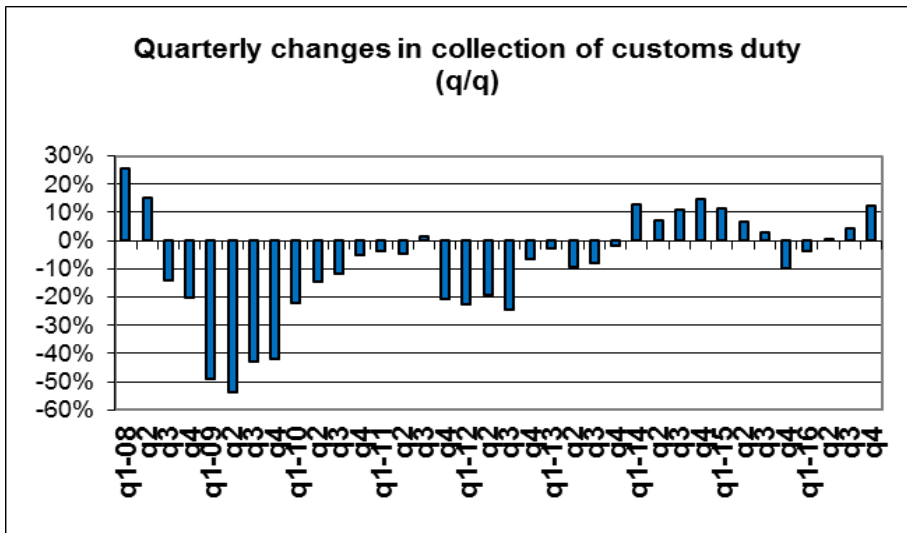
Net effects of collection per type of tax



Customs duties

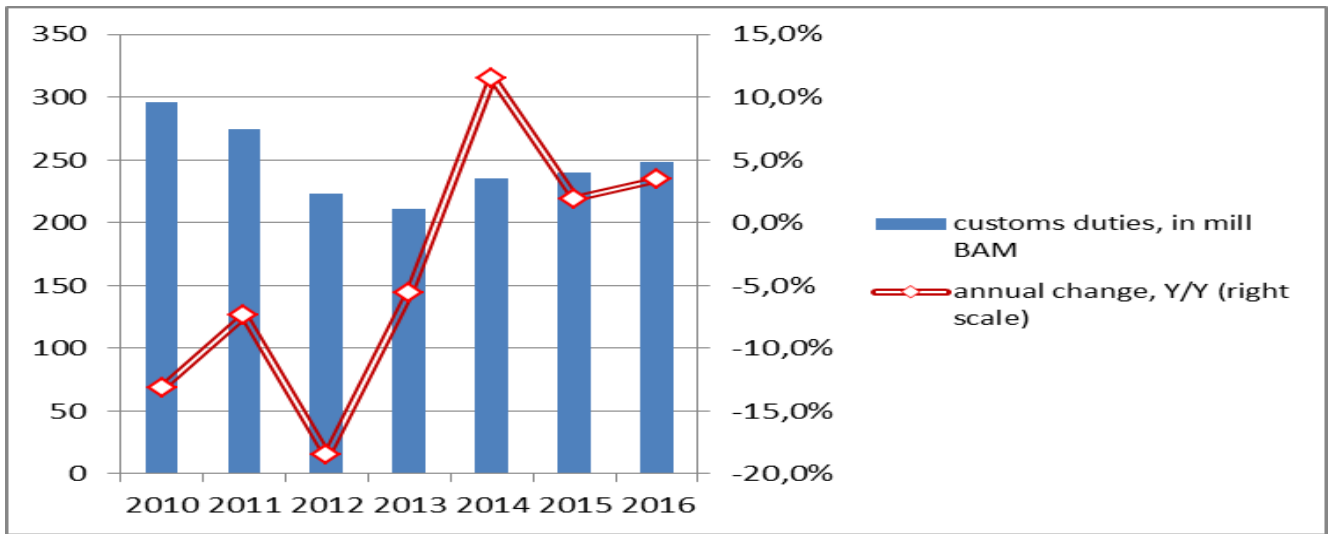


Annual performance in 2016, Change Y/Y:
3,5%

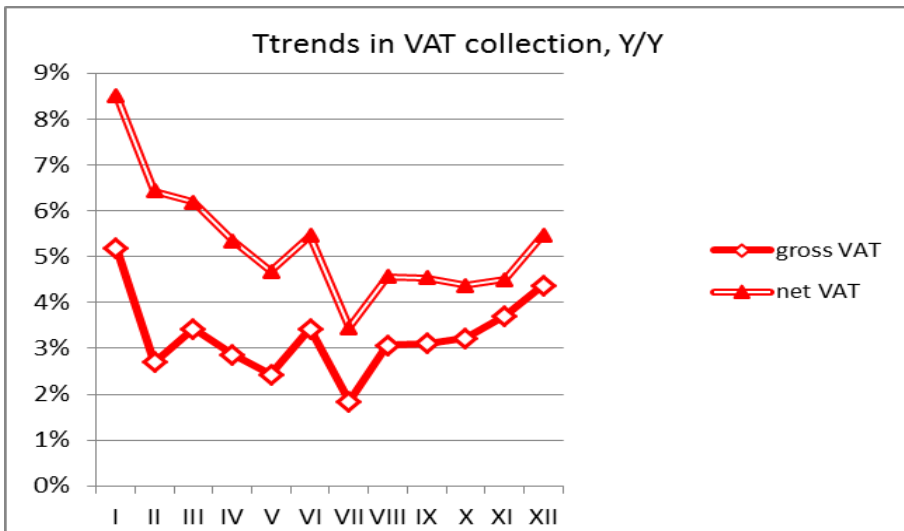
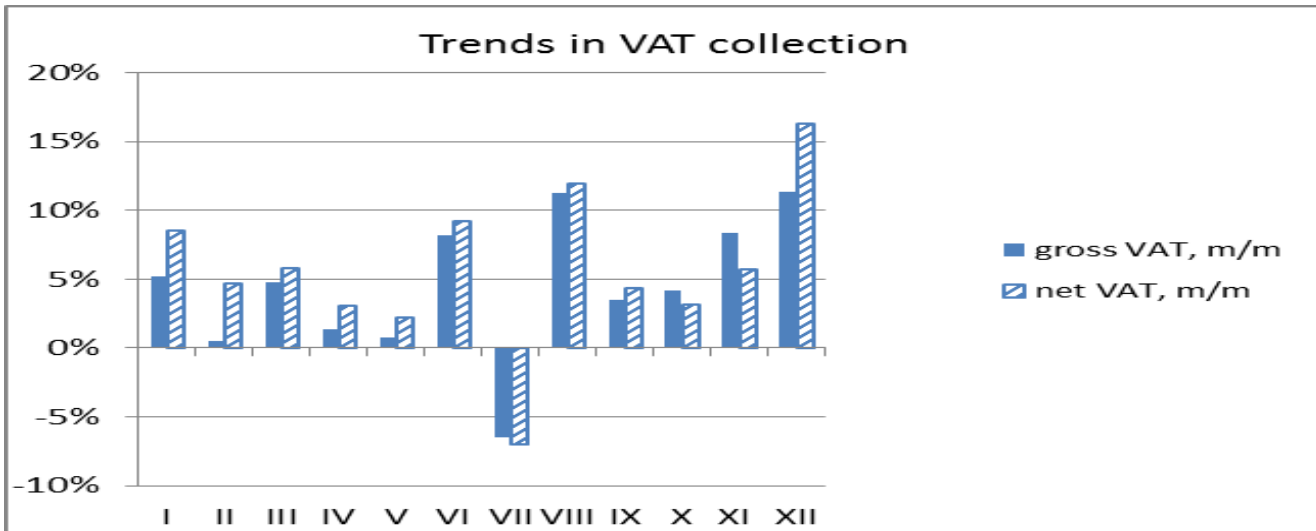


Quarterly trends, 2016

Q1	-3,9%
Q2	0,3%
Q3	4,4%
Q4	12,4%

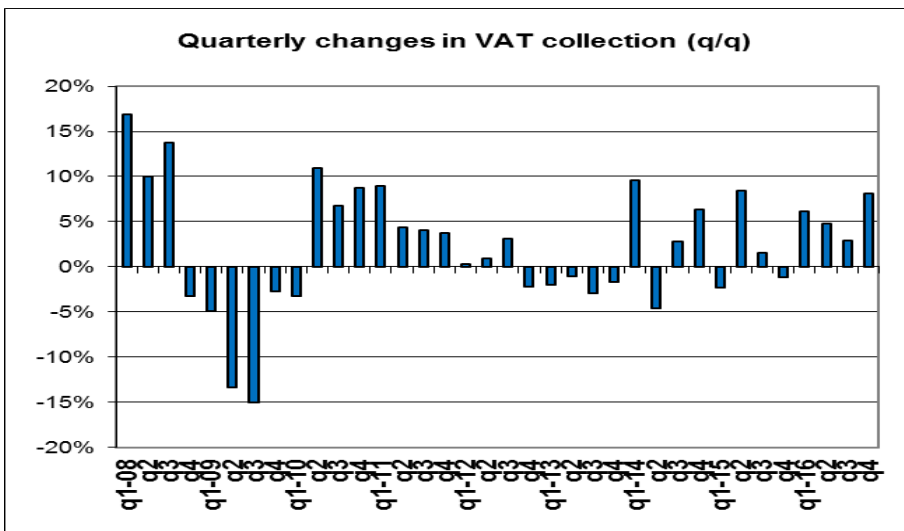


VAT



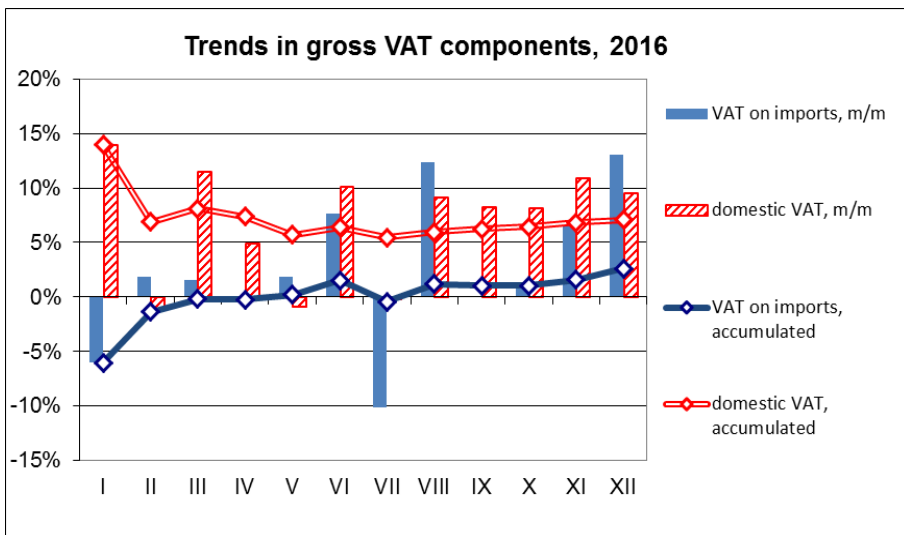
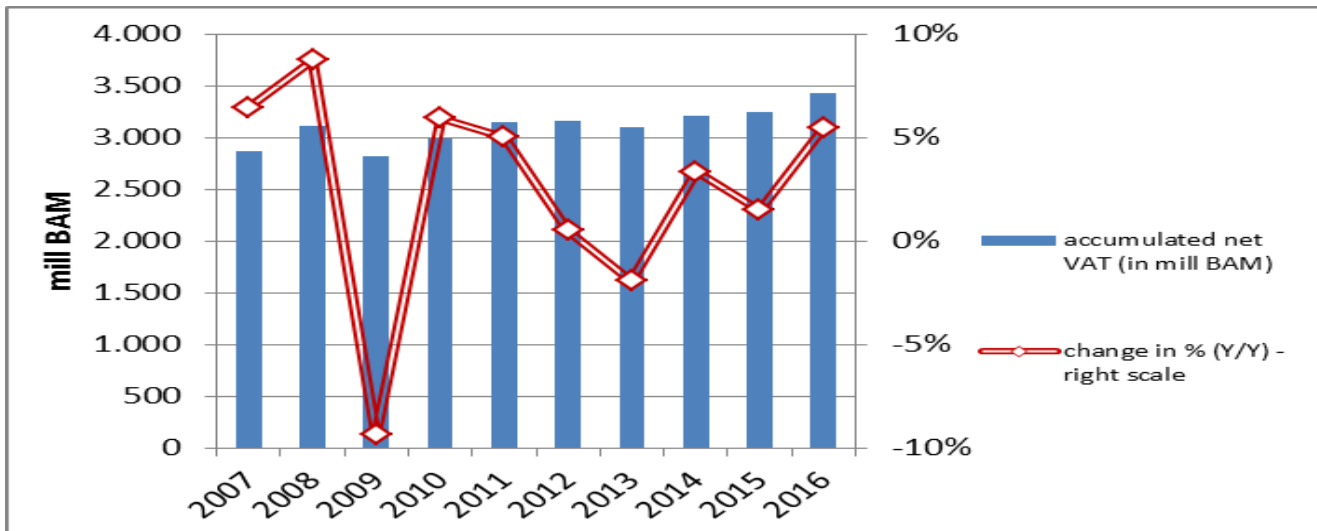
Annual performance in 2016 - Change, Y/Y

Gross VAT	4,4%
Refunds	1,1%
Net VAT	5,5%

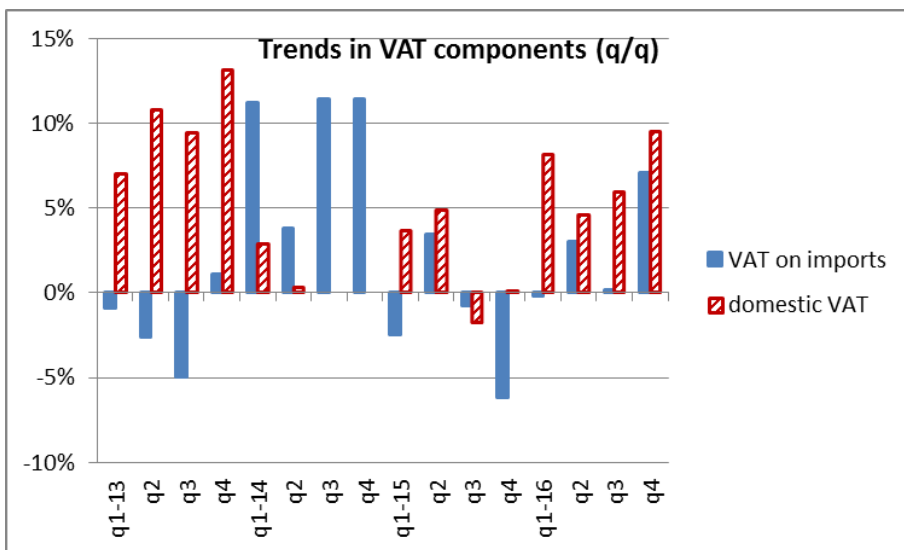


Quarterly trends, 2016

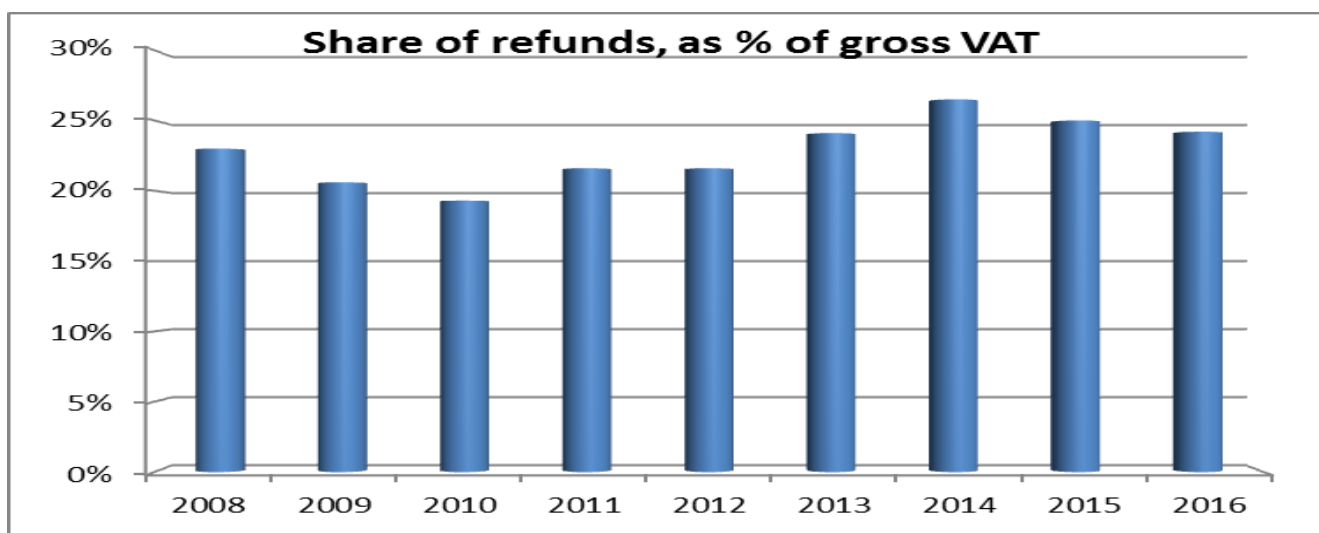
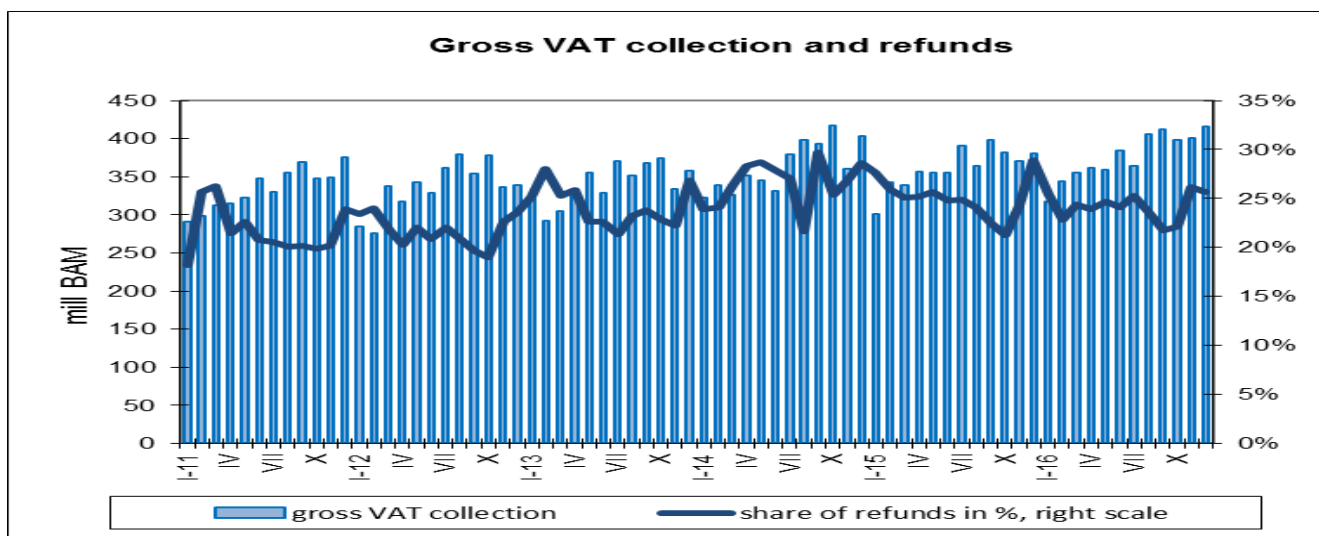
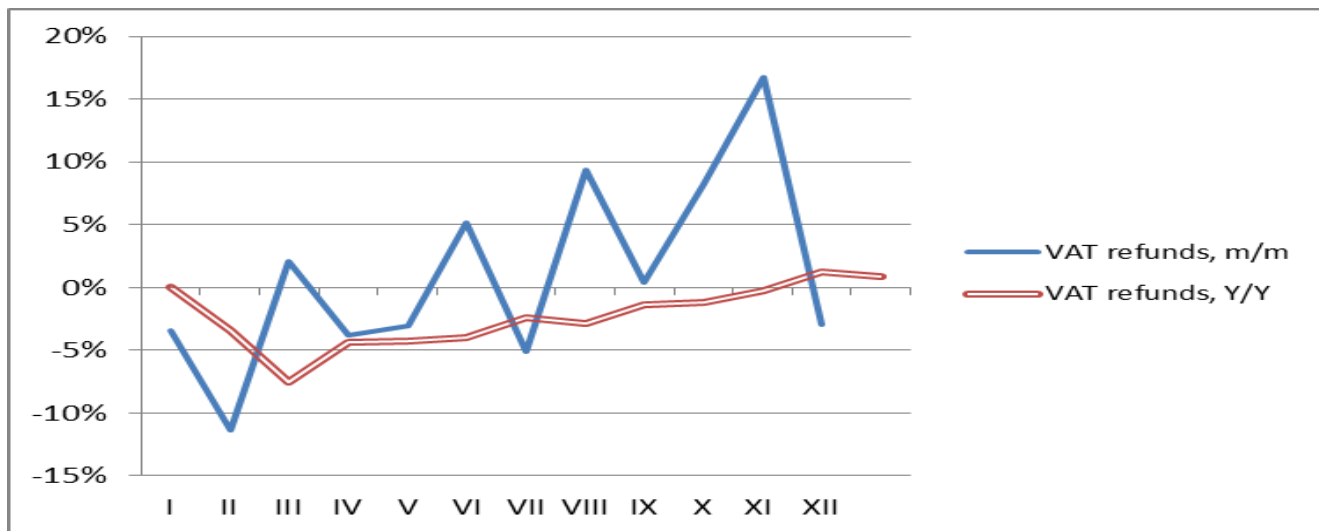
Q1	6,2%
Q2	4,8%
Q3	2,9%
Q4	8,1%



Annual performance in 2016 - Change, Y/Y	
VAT on imports	domestic VAT
2,6%	7,1%

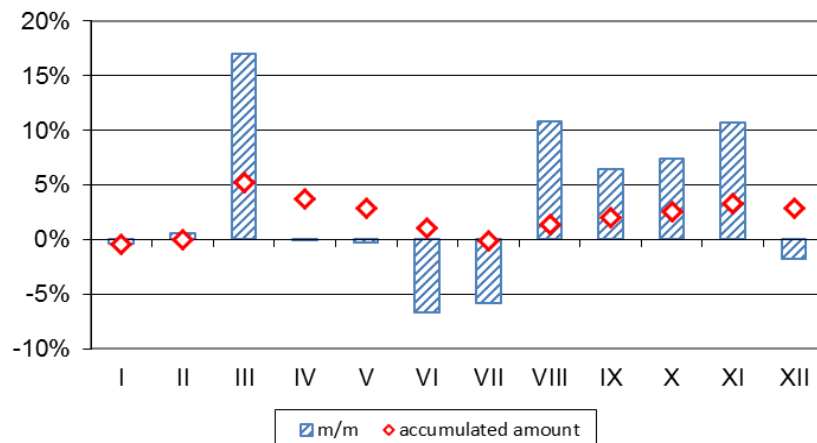


Quarterly trends, 2016		
Quarter	VAT on imports	domestic VAT
Q1	-0,2%	8,1%
Q2	3,0%	4,6%
Q3	0,1%	5,9%
Q4	7,0%	9,5%

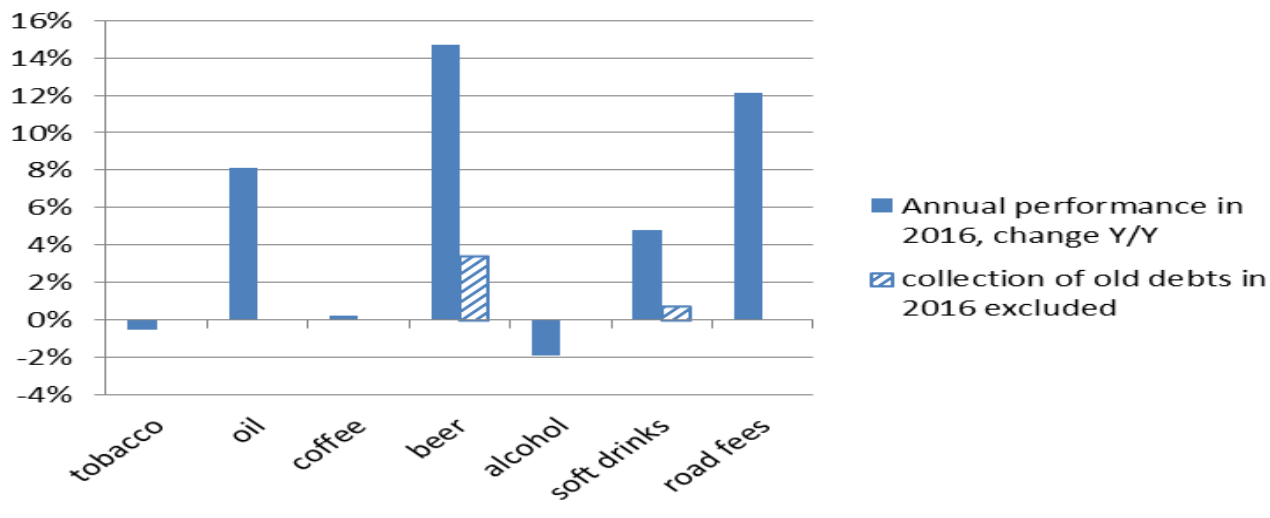
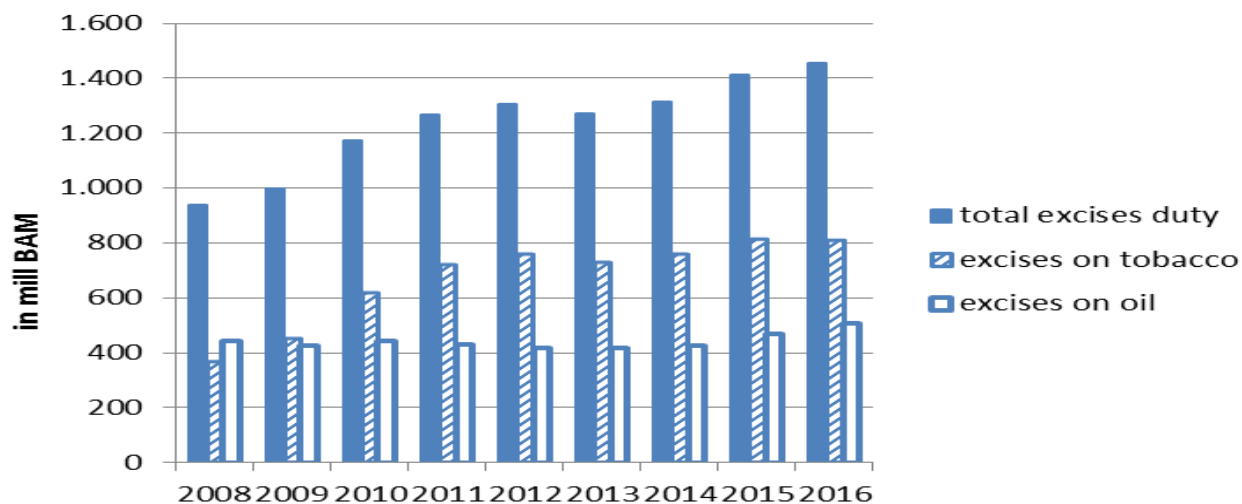


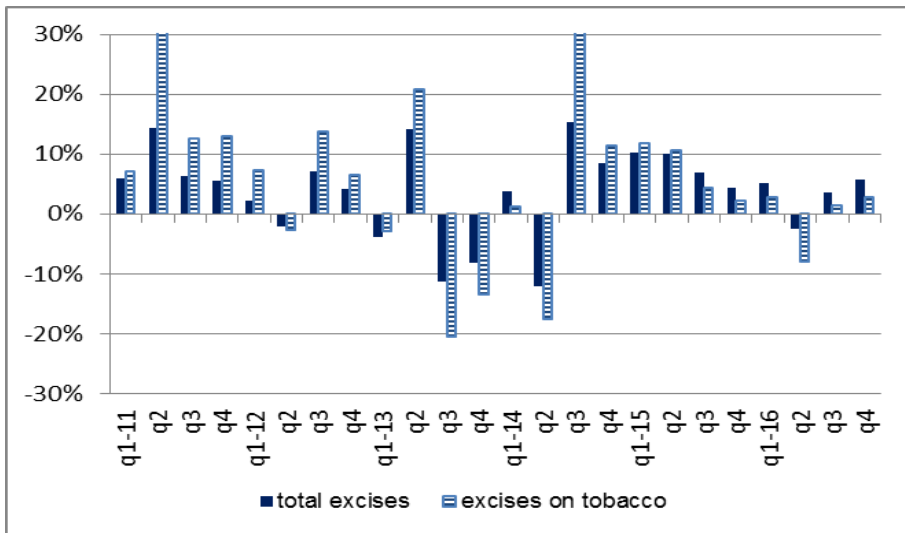
Excises

Trens in collection of excise duties



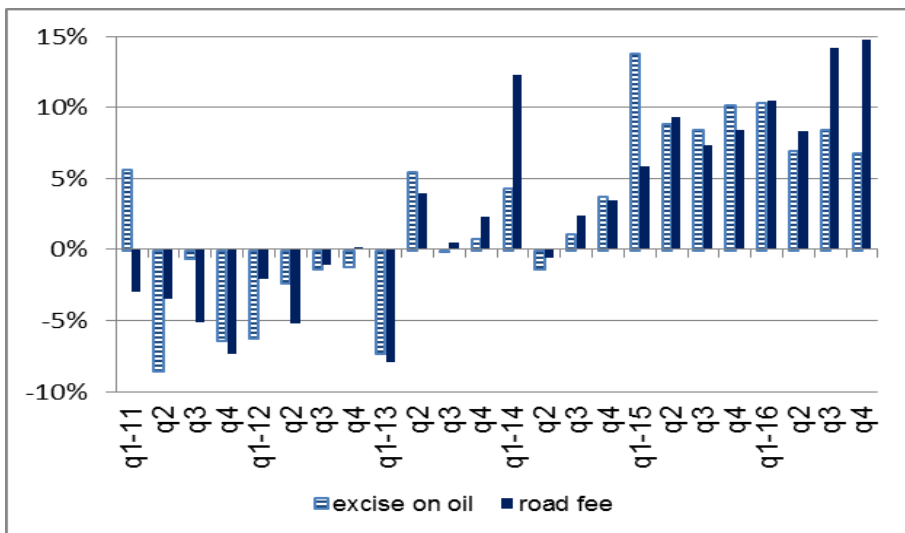
Annual performance in 2016, Change Y/Y:
2,9%





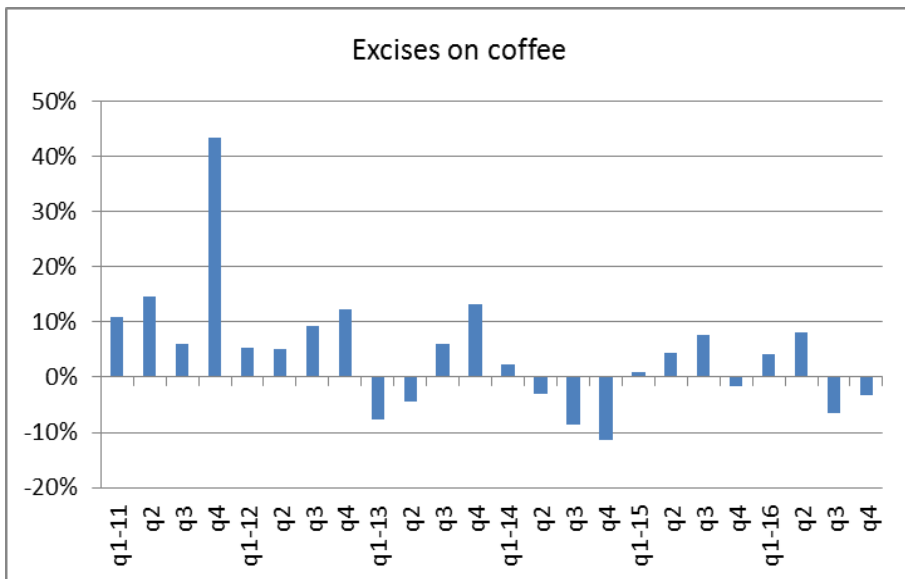
Quarterly trends, 2016

	Total excises	Excises on tobacco
Q1	5,3%	2,8%
Q2	-2,5%	-8,1%
Q3	3,6%	1,4%
Q4	5,8%	2,7%



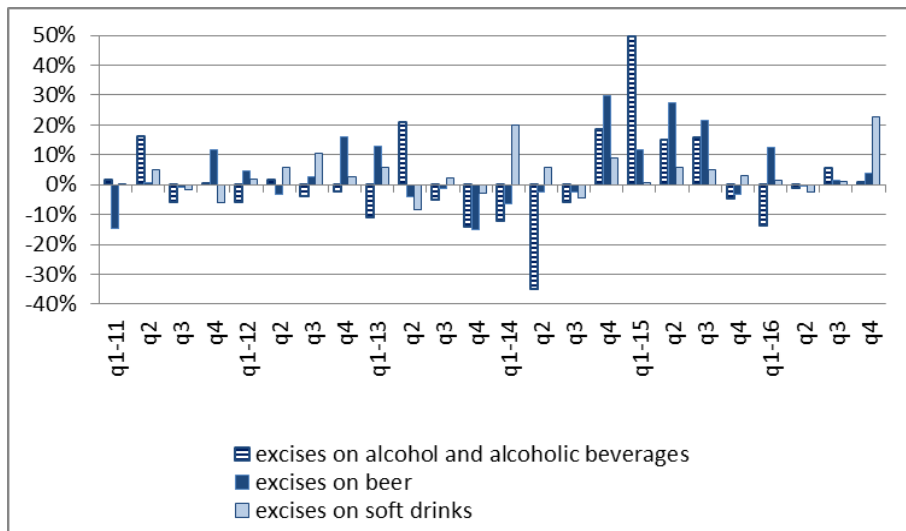
Quarterly trends, 2016

	Excises on oil	Road fees
Q1	10,4%	10,5%
Q2	7,0%	8,4%
Q3	8,5%	14,2%
Q4	6,8%	14,8%



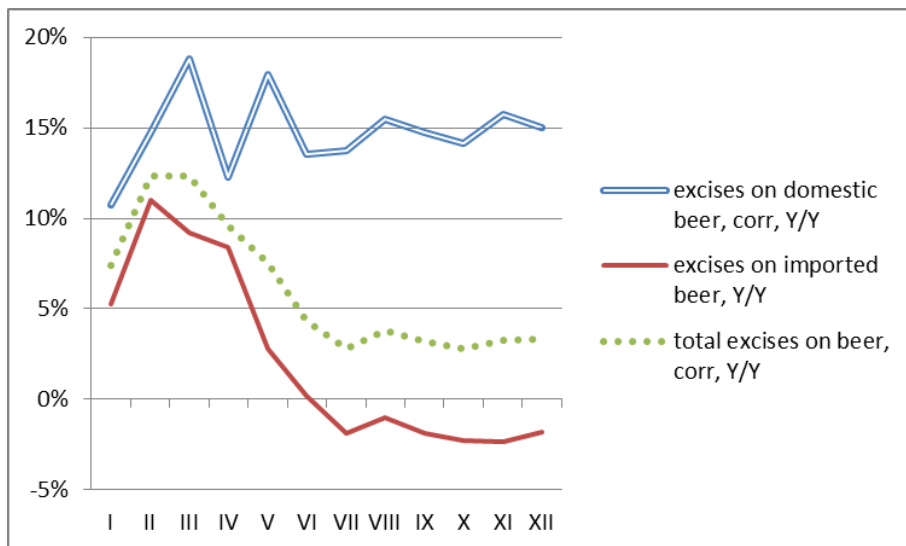
Quarterly trends, 2016

Q1	4,2%
Q2	8,1%
Q3	-6,5%
Q4	-3,2%



Quarterly trends, 2016

	Alcohol	Beer	Soft drinks
Q1	-13,9%	12,3%	1,3%
Q2	-1,3%	-0,1%	-2,5%
Q3	5,7%	1,6%	1,0%
Q4	1,1%	44,2%	22,8%



Excise on beer
Annual performance in 2016 - Change, Y/Y

Total *)	3,4%
Imported	-1,8%
Domestic *)	15,0%

*) collection of old debts excluded from the 2016 collection

Note for readers:

Due to a longer absence of the key staff in 2017 articles (analysis, projections) are available only in bulletins in local languages.